

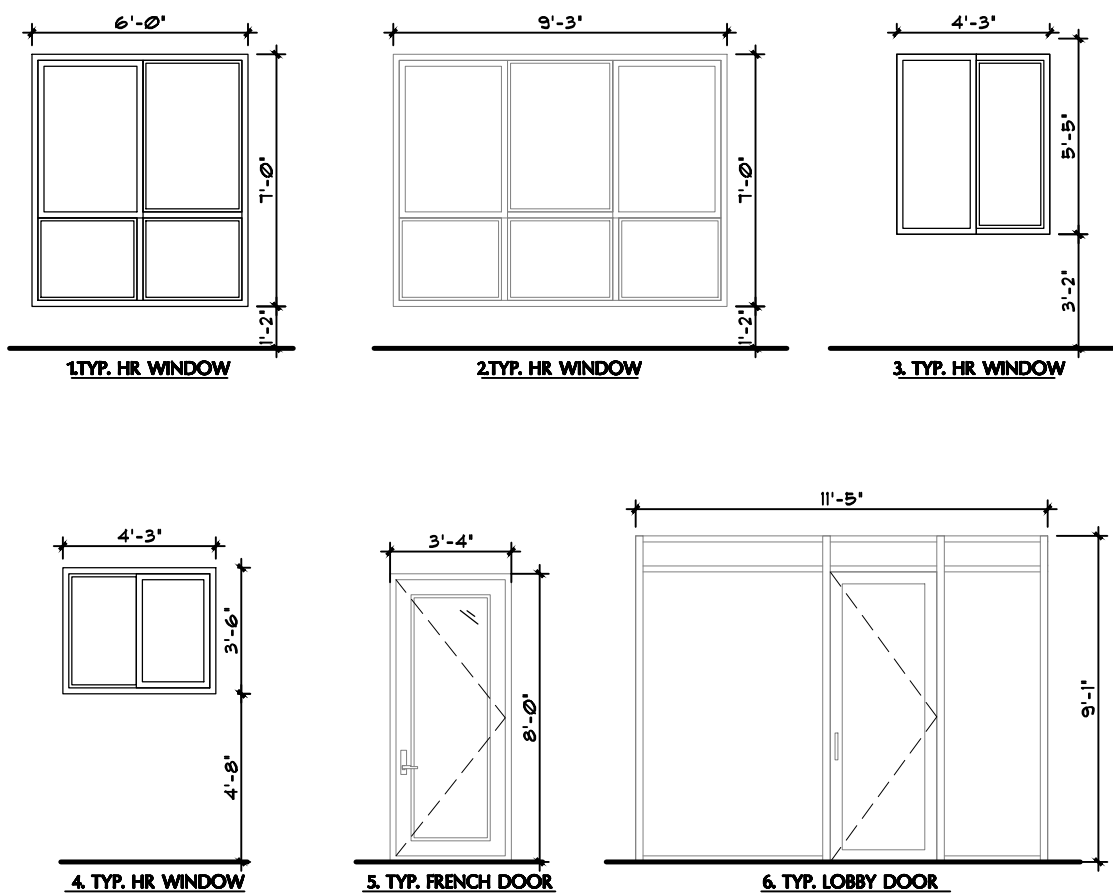
Copyright © 2022 Pascual, Perez, Kiliddjian, Starr - Architects + Planners. The architectural design and detail drawings for this building and / or overall project are the legal property of and all rights reserved by the Architect. Their use for reproduction, construction or distribution is prohibited unless authorized in writing by Architect.

Received after DRC Meeting to address DRC comments prior to the submission of a Building Permit Application.

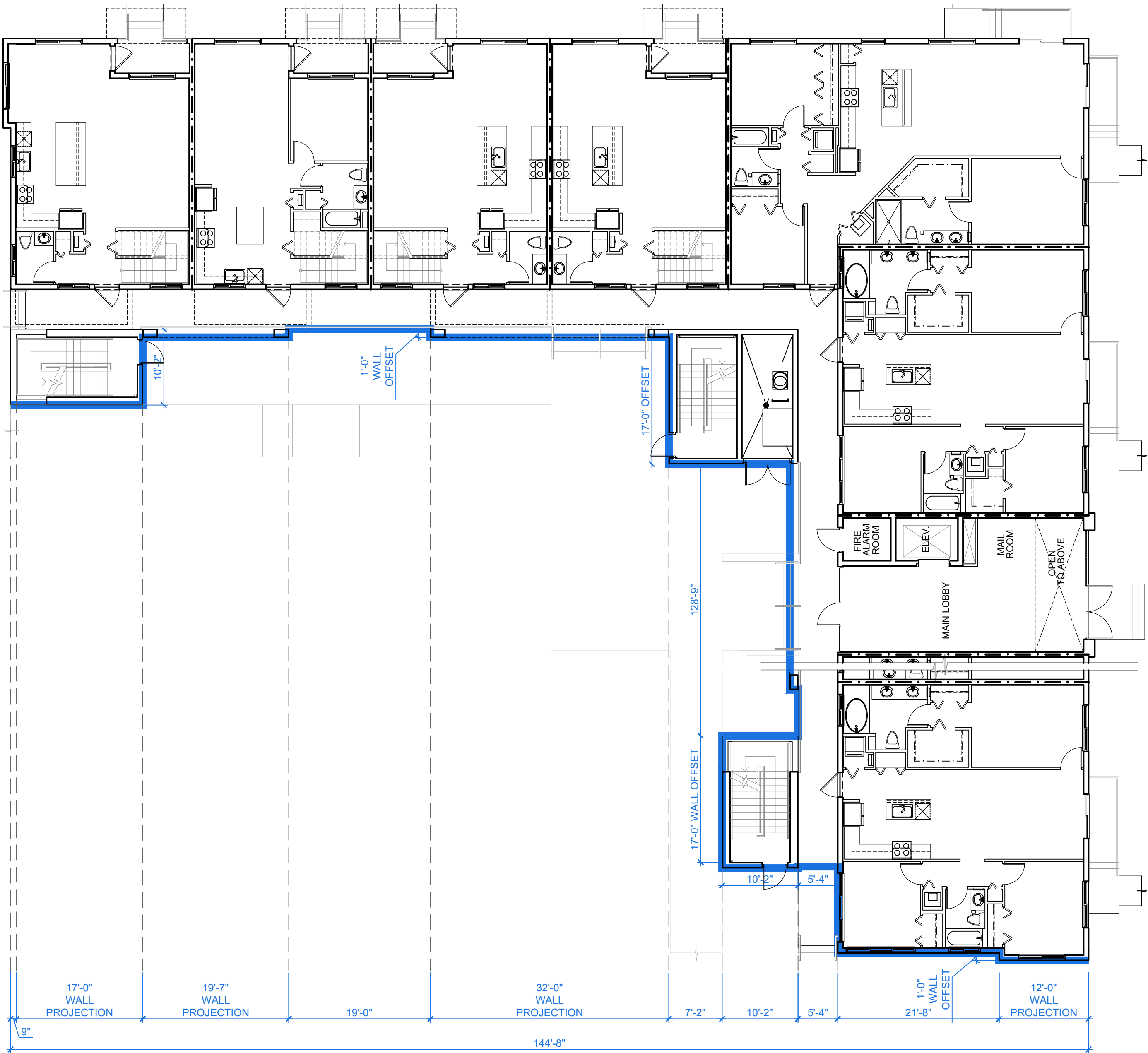
155.5602. COMMERCIAL, INSTITUTIONAL AND MIXED USED DESIGN STANDARDS <b>BUILDING TYPE II</b>		
FACADE ARTICULATION		SIDE LEFT ELEVATION (FACING PUBLIC STREET)
	REQUIRED	PROVIDED
A. OFFSETS REQUIRED	FACADES GREATER THAN 60 FEET SHALL BE ARTICULATED (PROJECTIONS OR RECESSES)	144'-8"
	ONE FOOT DEEP MINIMUM (1 FT)	1 FT
	TEN FEET WIDE (10 FT)	12 FT
B. OFFSET ALTERNATIVES	NO MORE THAN 40 FEET APART	19'-0" FT MAX
	I. CHANGES IN FACADE COLOR OR MATERIAL THAT FOLLOW THE SAME DIMENSIONAL STANDARDS AS THE OFFSET REQUIREMENTS	BODY & ACCENT COLOR PROVIDED AND 3 OPTIONAL COLOR SCHEMES TO SELECT. ACCENT COLOR FOLLOWS OFFSET STANDARD
	II. COLUMNS OR PLASTERS THAT ARE AT LEAST 8" DEEP AND 8" WIDE AND HAVE AT LEAST 90 PERCENT OF THE FACADES HEIGHT	N/A
C. OFFSET ALTERNATIVES	III. ROOFLINE CHANGES THAT VERTICALLY ALIGN WITH CORRESPONDING WALL OFFSET OR CHANGE IN FACADE COLOR OR MATERIAL INCLUDING CHANGES IN FOOT PLANS AND CHANGES IN THE HEIGHT OF A PARAPET WALL	PARAPET ROOFLINES VERTICALLY ALIGN WITH MIDDLE AND BASE WALL OFFSET
	IV. AWNINGS OR OTHER SHADING SERVICES OVER DOORS AND WINDOWS THAT FOLLOW THE SAME DIMENSIONAL STANDARDS AS THE OFFSET REQUIREMENTS	STEBROWS AND HALLWAYS ARE PROVIDING SHADING OVER DOORS AND WINDOWS

FACADE ARTICULATION CHART

LEFT SIDE ELEVATION FENESTRATION CALCULATIONS			
GLASS ITEM	GLASS AREA PER ITEM	# OF ITEMS	TOTAL SF PER ITEM
1.TYP. HR WINDOW	42.0 SF	1	42.0 SF
2.TYP. HR WINDOW	64.9 SF	1	64.9 SF
3.TYP. HR WINDOW	21.5 SF	7	150.5 SF
4.TYP. HR WINDOW	14.8 SF	1	14.8 SF
5.TYP. FRENCH DOOR	27.0 SF	5	135.0 SF
6.TYP. LOBBY DOOR	103.7 SF	0	0.0 SF
TOTAL		15	407.2 SF
FACADE AREA (FIRST FLOOR / BASE)			1,349.0 SF
FENESTRATION PERCENTAGE (30% MIN)			30.2 %

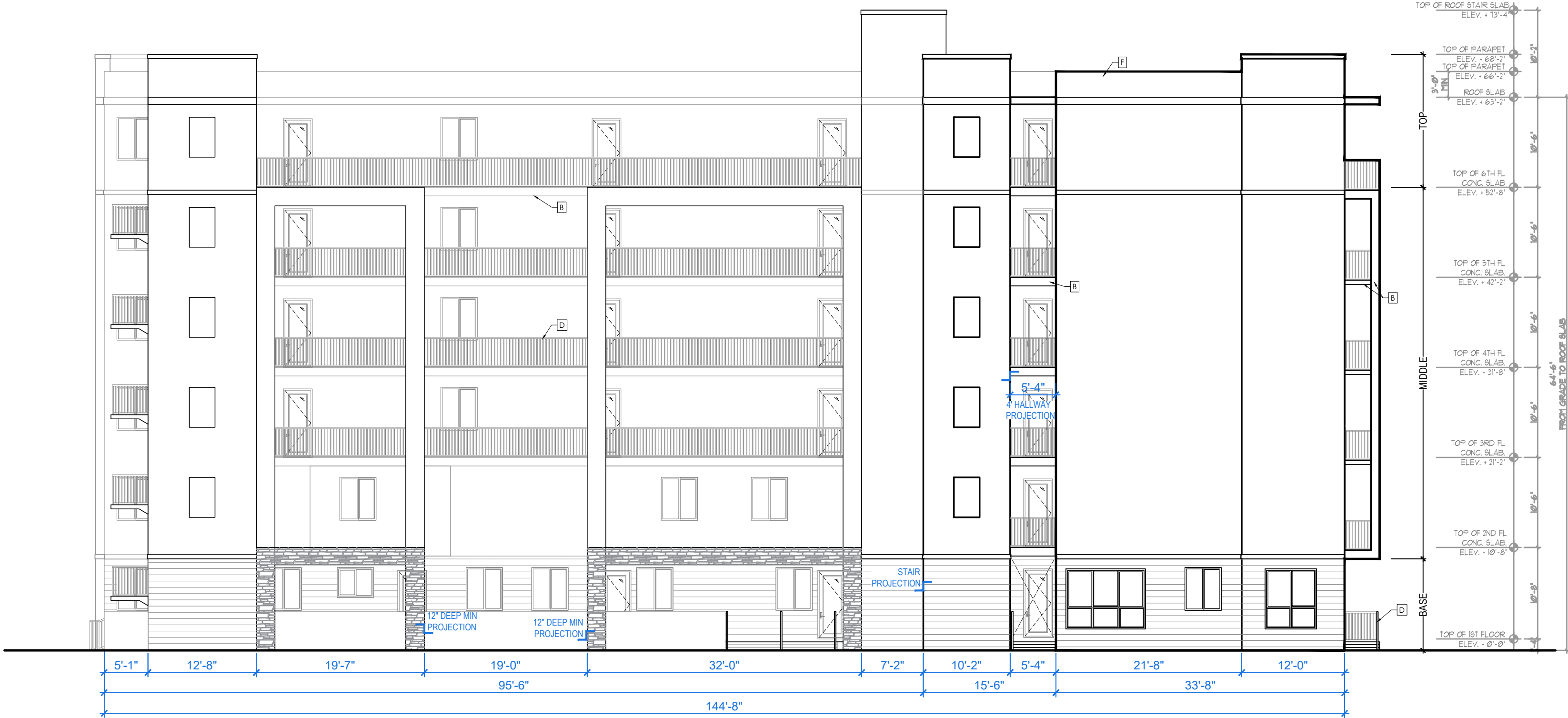


FENESTRATION CALCULATIONS



TYPE 52 UNIT BUILDING - TYP. 3RD-6TH FLOOR PLAN

SCALE: 1/8" = 1'-0"



TYPE 52 UNIT BUILDING - LEFT SIDE ELEVATION

SCALE: 1/8" = 1'-0"

**PASCUAL PEREZ KILIDDJIAN STARR**  
ARCHITECTS+PLANNERS  
LICENSE # AA 26001357  
EDGARDO PEREZ , AIA  
LICENSE No. : AR 0015394  
MARIO P. PASCUAL , AIA  
LICENSE No. : AR 0008254  
PETER KILIDDJIAN, AIA  
LICENSE No. : AR 0093067  
ANDREW STARR, AIA  
LICENSE No. : AR 0095130  
AT THE BEACON CENTER  
1330 NW 84th AVENUE  
DORAL, FLORIDA 33126  
TELEPHONE : (305) 592-1363  
FACSIMILE : (305) 592-6865  
http://www.ppkcrch.com  
COMPREHENSIVE PASCUAL, PEREZ, KILIDDJIAN, STARR, ARCHITECTS + PLANNERS  
The architectural design and detail drawings of this building and/or overall project are the legal property of, and all rights are reserved by the ARCHITECT. Their use for reproduction, construction or distribution is prohibited unless authorized in writing by the Architect.

REVISIONS:

OWNER:  
LENNAR HOMES

**POMPAÑO LIVE!**  
BY: LENNAR HOMES  
POMPAÑO BEACH, FLORIDA

SEAL:

52 BUILDING

ELEVATIONS

DATE: 2024-08-23  
SCALE: AS SHOWN  
DRAWN: CG/JC  
CHECK BY: PPKS  
JOB NO.:

A-13.4

SHEET NO.: